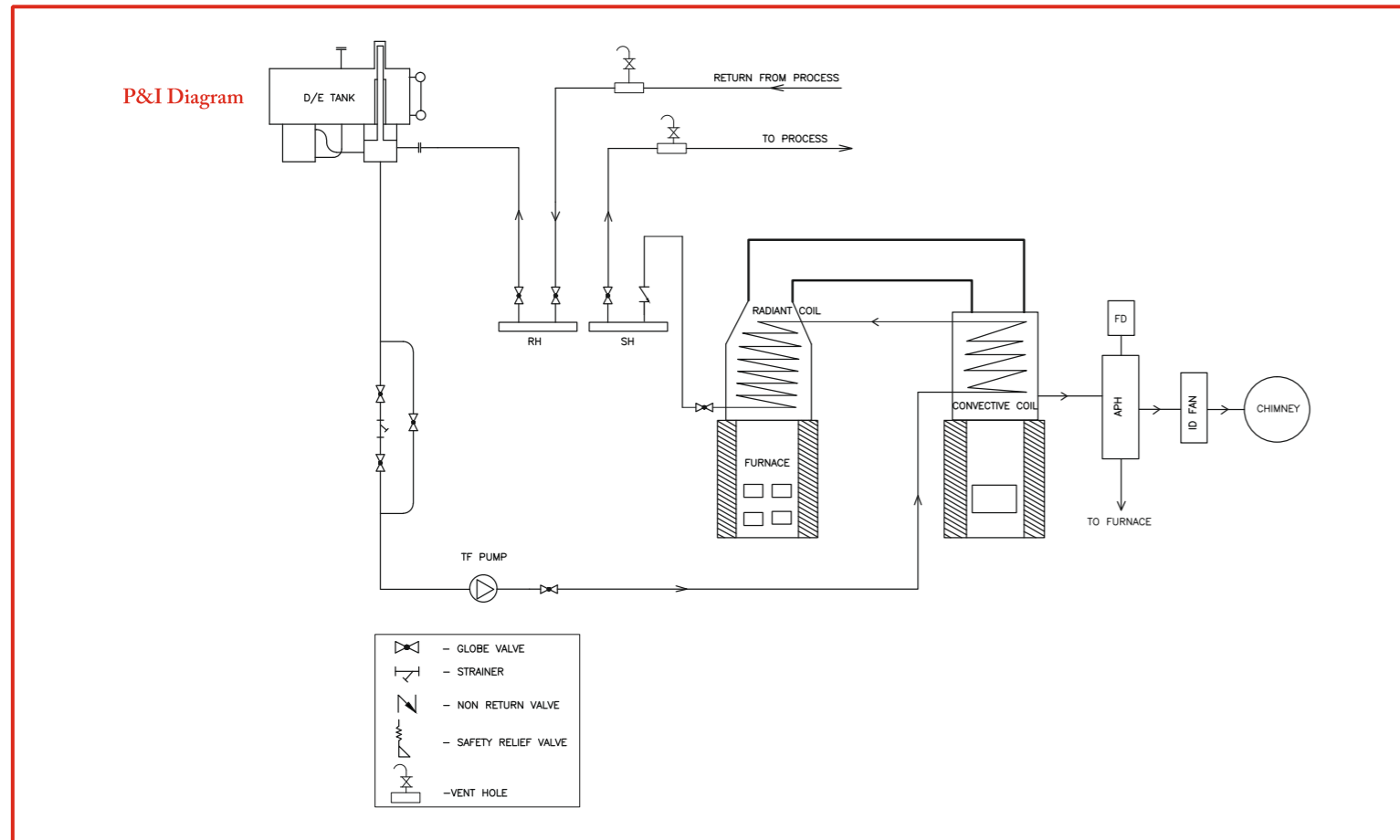


**TECHNICAL SPECIFICATIONS**

Description	Unit	MPW-02	MPW-04	MPW-06	MPW-10	MPW-15	MPW-20	MPW-25	MPW-30
Rated Output	Kcal / hr	2,00,000	4,00,000	6,00,000	10,00,000	15,00,000	20,00,000	25,00,000	30,00,000
Max Fluid Outlet Temp	Deg. C	← 300 →							
Fuel		← Husk / Wood / Coal →							
Thermal Efficiency									
On Coal	%	← 80% →							
On Wood / Husk	%	← 76% →							
Fuel Consumption									
Coal	Kgs / hr	50	100	150	250	375	500	625	750
Briquette / Husk / Wood	Kgs / hr	66	131	197	328	493	658	822	987
Electrical Supply		AC 3 phase 415 Volts 50H <sup>2</sup> 4 wire system							
Thermic Fluid Pump	HP	10	10	12.5	15	25	40	50	60
Induced Draught Fan	HP	3	5	7.5	12.5	15	20	30	30
Forced Draught Fan	HP	1.0	2	3	5	7.5	10	12.5	15
Total Connected Load	HP	14	17	23	32.5	48	70	92.5	105

■ GCV on Coal - 5000 kcal/kgs , Briquette/husk/Wood - 4000 kcal/kgs

Note: We have already manufactured & supplied up to 60 Lakh Kcal/hr



**FULL FLEDGED SALES AND SERVICE NETWORK  
IN INDIA & ABROAD**

Erode - Madurai - Tirupur - Trichy - Bangalore - Cochin - Hyderabad - Mumbai  
New Delhi - Pune - Bhubaneswar - Burdwan - Kolkata - Raipur - Guwahati - Vizag  
Srilanka - Myanmar - Malaysia - Bangladesh - Thailand - UAE



# MAXPAC

**SOLID FUEL FIRED VERTICAL THERMIC FLUID HEATER**



**SKID MOUNTED THERMIC FLUID HEATER**

**MAXTHERM (INDIA) PRIVATE LIMITED**

MAXTHERM HOUSE

New No: 28/1 Old No: 38/1 Ganpathraj Nagar Main Road, Virugambakkam, Chennai - 600 092.

Tele: 044 - 2377 5911 / Mobile: +91 94983 70061 Email : sales@maxthermindia.com / info@maxthermindia.com

Web : www.maxthermindia.com



**PIONEERS IN PROCESS HEAT**

**MAXPAC SOLID FUEL THERMIC FLUID HEATER**



**Salient Features**

- ▶ Proven Design
- ▶ Fully Automatic
- ▶ Maximum Outlet Temp. of 300° C.
- ▶ Consistent Efficiency of 76%
- ▶ High Unit Dependability
- ▶ Suitable for Multi Fuel (Husk / Firewood / Coal / Imported Coal)
- ▶ Combustion Type  
( Fixed Grate / Multi Fuel Bar / Dumping Grate / Bubbling Bed / FBC / Travelling Grate )
- ▶ Prompt Service and Spares Support

**Built In Safeties and Controls**

- ▶ **Fluid Level Low**  
Magnetic Level Switch Ensures Minimum Thermic Fluid level in the De-aerator cum Expansion Tank.
- ▶ **Fluid Level Low**  
Different Pressure Switch Ensures Sufficient Flow of Thermic Fluid across the coil and thus prevent coil chocking, over heating and coil failure.
- ▶ **Outlet Temperature High**  
Temperature Indicator cum Controller prevents over heating of Thermic Fluid.
- ▶ **Return Temperature High**  
Temperature Indicator cum Controller Ensure Constant Temperature for the process and control ID & FD Fan Operation according to the set temperature.
- ▶ **Spring Loaded Safety Valve**



60 LAKH KCAL THERMIC FLUID HEATER

**HIGH EFFICIENCY VERTICAL THERMIC FLUID HEATER**



**Quality Assured Manufacturing  
Designed as per DIN 4754 Ensures**

- ▶ Optimum Heat Transfer
- ▶ Larger Furnace Volume
- ▶ Larger Distance Between Flame and Coil
- ▶ Low Film Temperature
- ▶ Low Tube Wall Temperature

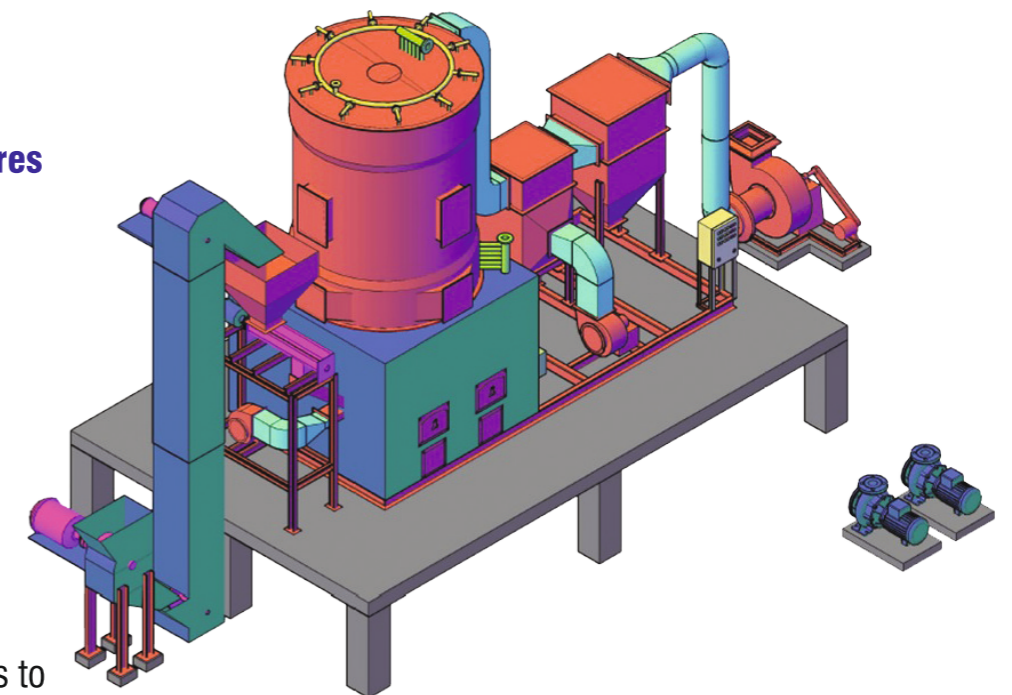
**Machine Wound Coil  
Manufacturing Facility Ensures**

- ▶ No Hot Spot in the Coil
- ▶ Longer Heater Coil Life
- ▶ Longer Thermic Fluid Life

**High Quality Materials Input**

- ▶ Boiler Quality Tubes Conforms to BS 3059 Part I from TATA & TI Group

- ▶ All Components are of Reputed Make.



AUTO FUEL FEEDING THERMIC FLUID HEATER